



Ribosomal Protein S23 Polyclonal Antibody

Catalog No	YP-Ab-04164
Isotype	IgG
Reactivity	Human;Mouse;Rat
Applications	WB;ELISA;IHC
Gene Name	RPS23
Protein Name	40S ribosomal protein S23
Immunogen	The antiserum was produced against synthesized peptide derived from human RPS23. AA range:1-50
Specificity	Ribosomal Protein S23 Polyclonal Antibody detects endogenous levels of Ribosomal Protein S23 protein.
Formulation	Liquid in PBS containing 50% glycerol, 0.5% BSA and 0.02% sodium azide.
Source	Polyclonal, Rabbit,IgG
Purification	The antibody was affinity-purified from rabbit antiserum by affinity-chromatography using epitope-specific immunogen.
Dilution	WB 1:500-2000;IHC-p 1:50-300; ELISA 2000-20000
Concentration	1 mg/ml
Purity	≥90%
Storage Stability	-20°C/1 year
Synonyms	RPS23; 40S ribosomal protein S23
Observed Band	16kD
Cell Pathway	Cytoplasm, cytosol . Cytoplasm . Rough endoplasmic reticulum . Detected on cytosolic polysomes (PubMed:25957688). Detected in ribosomes that are associated with the rough endoplasmic reticulum (By similarity). .
Tissue Specificity	Brain,Placenta,Testis,
Function	similarity:Belongs to the ribosomal protein S12P family.,
Background	Ribosomes, the organelles that catalyze protein synthesis, consist of a small 40S subunit and a large 60S subunit. Together these subunits are composed of 4 RNA species and approximately 80 structurally distinct proteins. This gene encodes a ribosomal protein that is a component of the 40S subunit. The protein belongs to the S12P family of ribosomal proteins. It is located in the cytoplasm. The protein shares significant amino acid similarity with <i>S. cerevisiae</i> ribosomal protein S28. As is typical for genes encoding ribosomal proteins, there are multiple processed pseudogenes of this gene dispersed through the genome. [provided by RefSeq, Jul 2008],



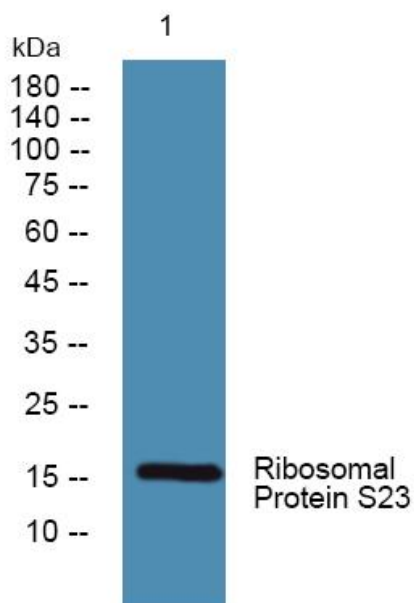
matters needing attention

Avoid repeated freezing and thawing!

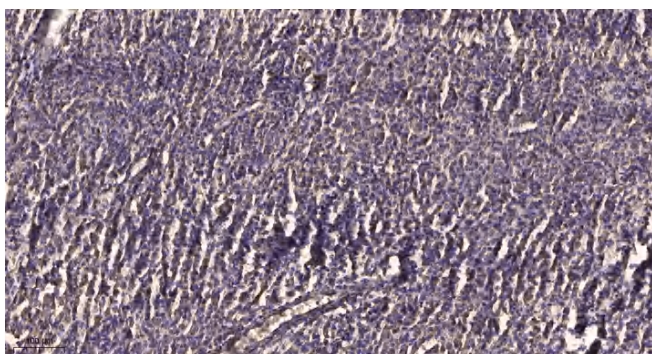
Usage suggestions

This product can be used in immunological reaction related experiments. For more information, please consult technical personnel.

Products Images



Western blot analysis of lysates from HCT116 cells, primary antibody was diluted at 1:1000, 4° over night



Immunohistochemical analysis of paraffin-embedded human meningioma. 1, Antibody was diluted at 1:200(4° overnight). 2, Tris-EDTA,pH9.0 was used for antigen retrieval. 3,Secondary antibody was diluted at 1:200(room temperature, 45min).